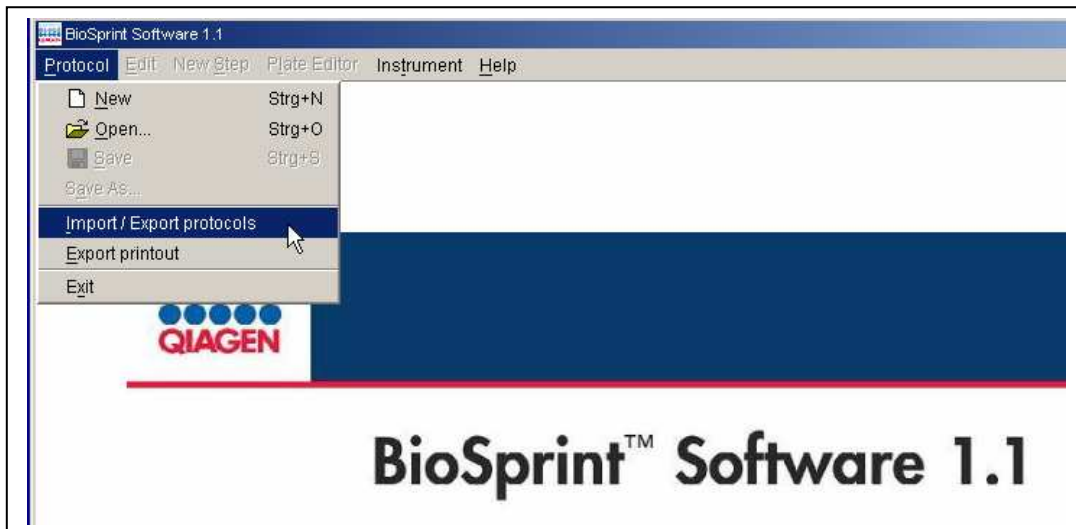


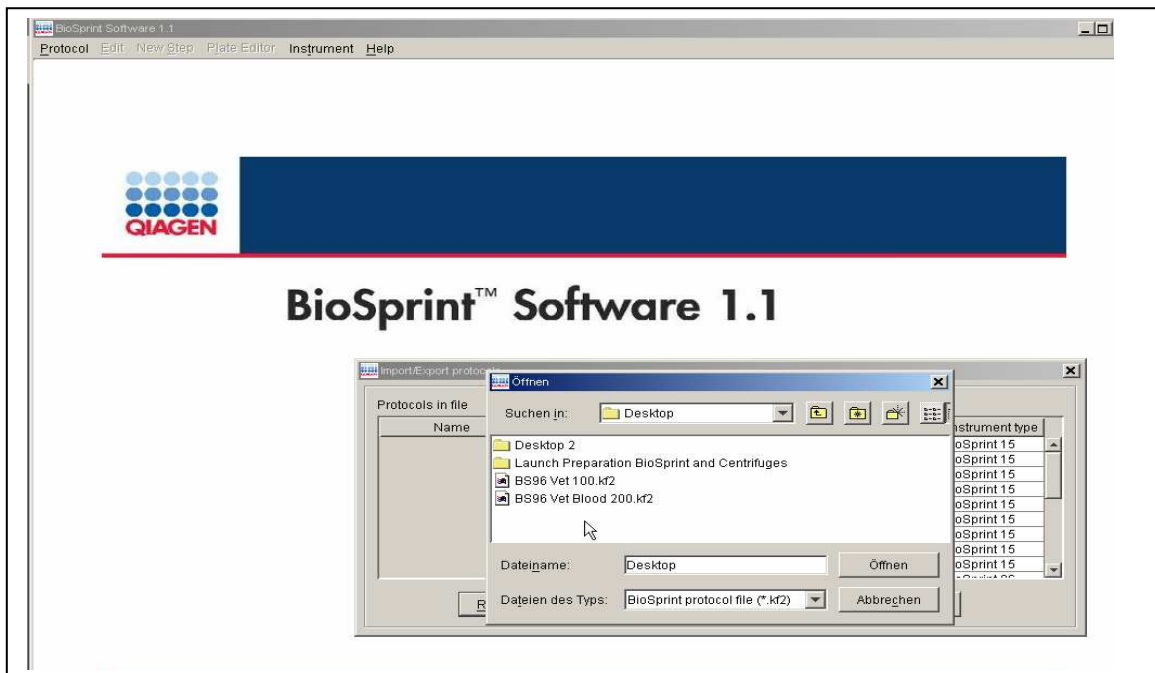
Importing files into BioSprint 1.1. Software

Anke Engels – 26.01-2009

- 1) Select "Protocol" → "Import/Export Protocols". Import protocol from USD-stick, desktop or whatever location where you saved the protocol file you wish to send to the instrument

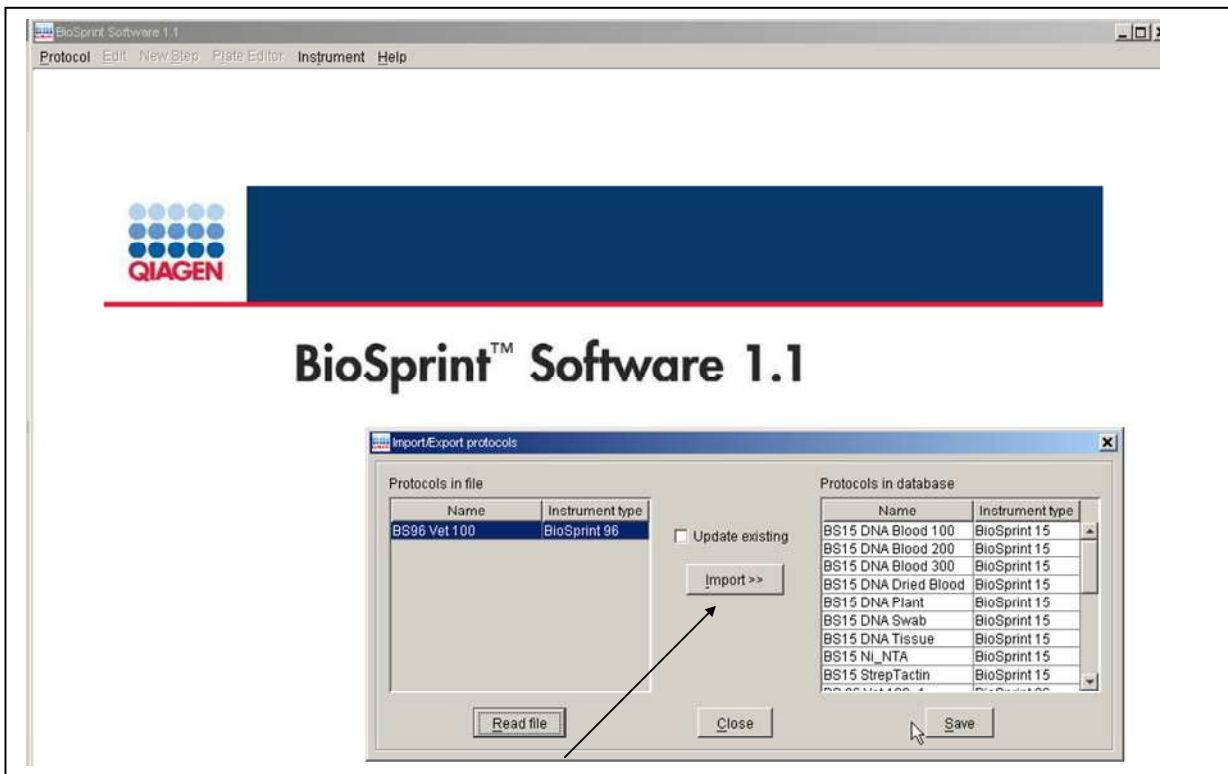


- 2) Click on "Read file" and search in the window for the location of the protocol file you wish to transfer to the instrument.

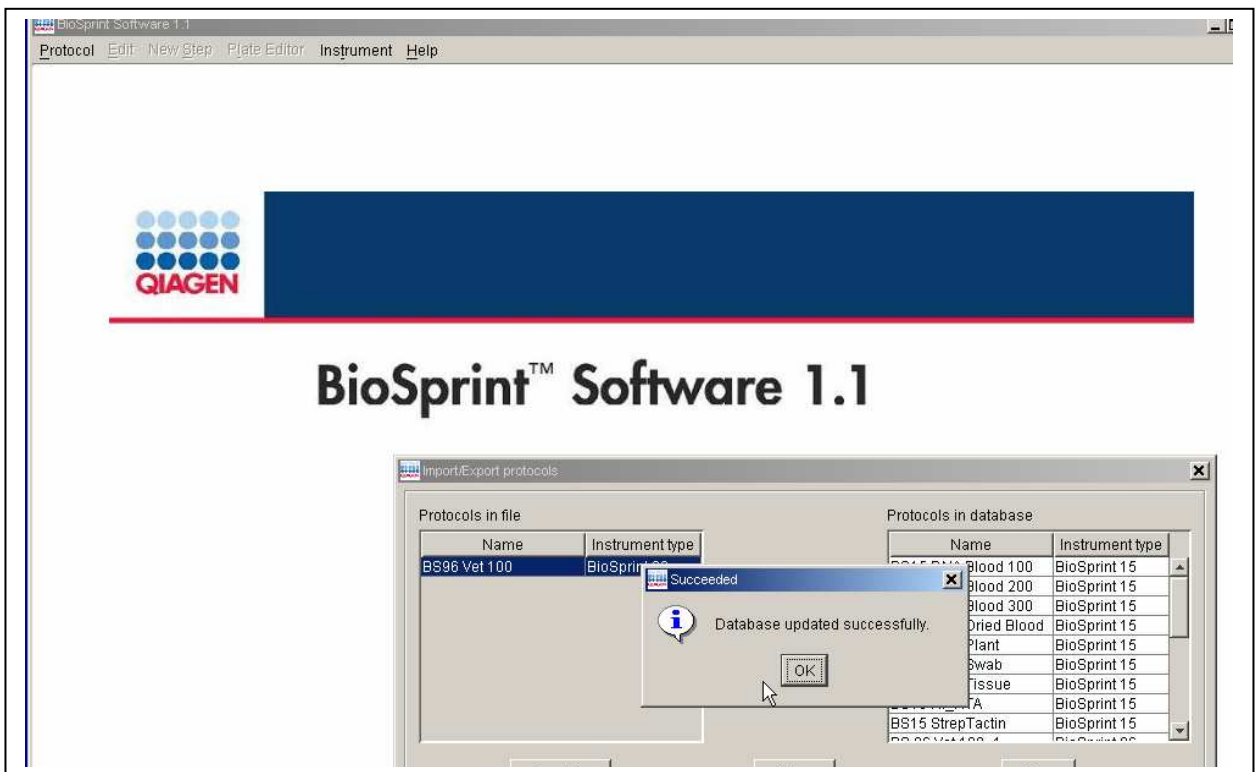


- 3) Select the protocol and click on "öffnen" or "open"

4) Mark the protocol in the left window and click on "import"



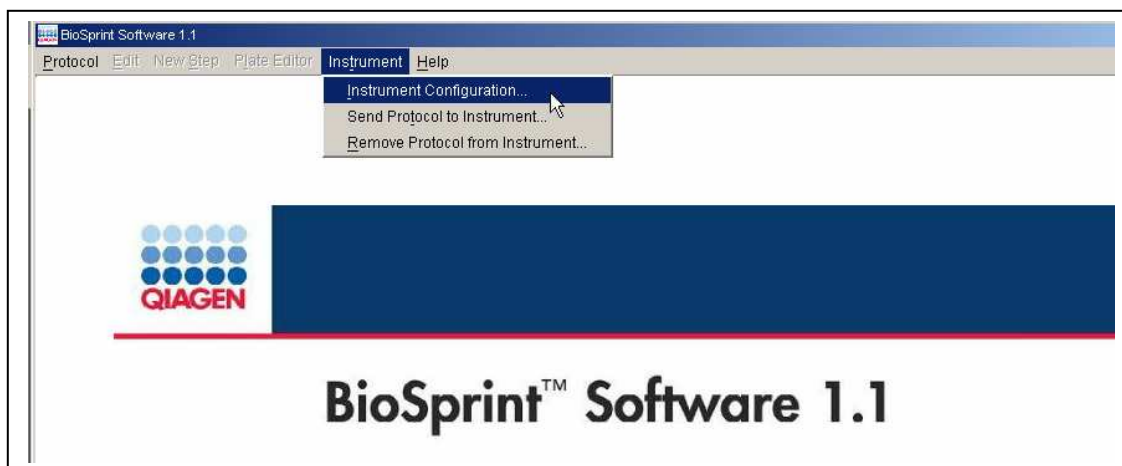
Message appears when transfer was o.k.



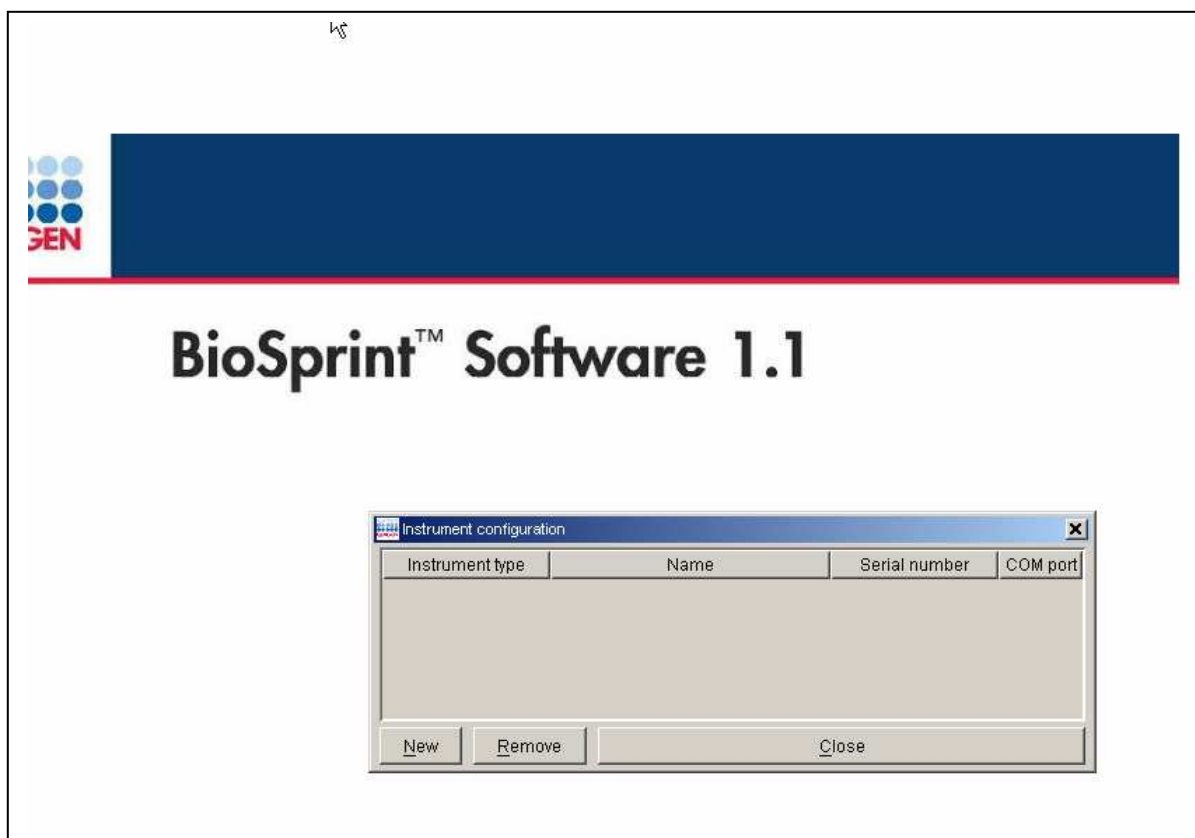
Sending protocol file to BioSprint 96 instrument

Anke Engels – 26.01-2009

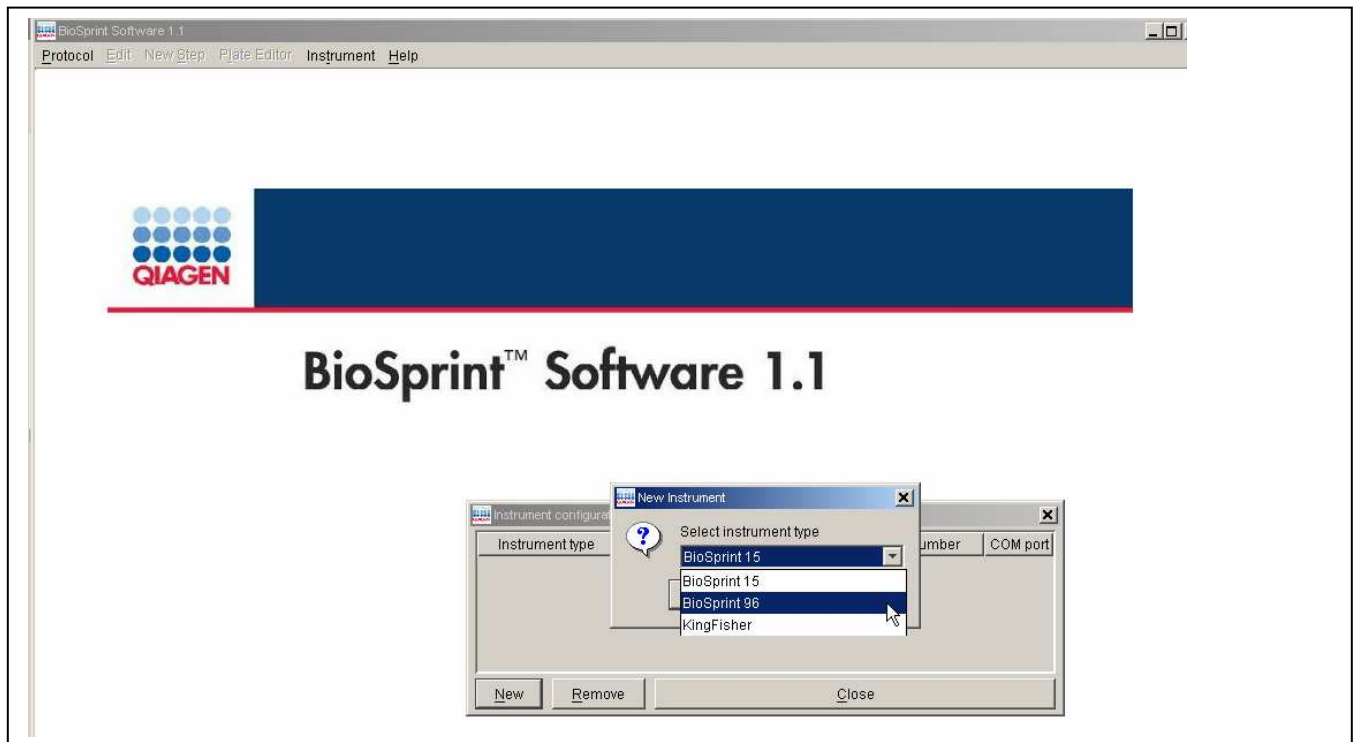
- 1) Connect BioSprint 96 with a computer on which BioSprint 1.1. Software is installed
(see user Software manual chapter 4 "Communication with BioSprint instrument")
- 2) Click on "Instrument" → "Instrument Configuration"



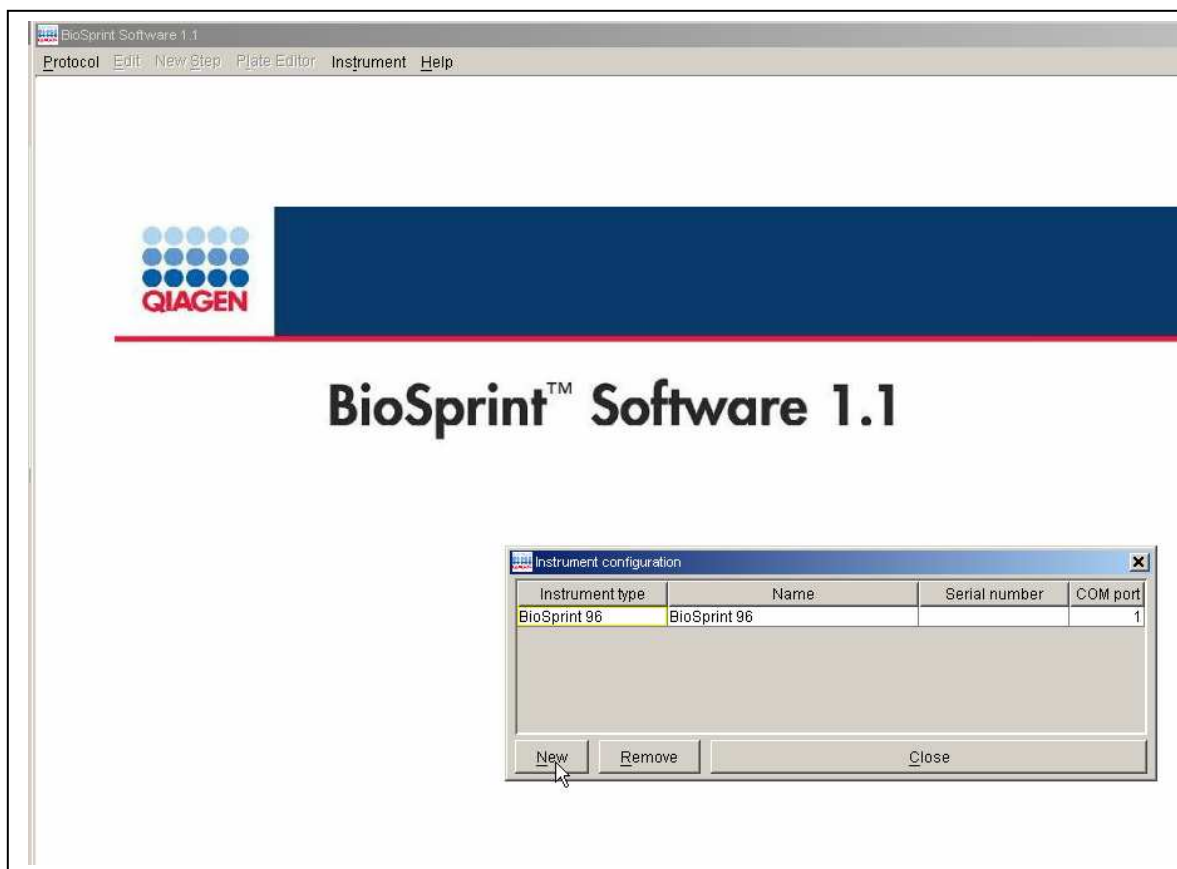
- 3) If no instrument is pre-programmed, click on "New"



4) Select "BioSprint 96"

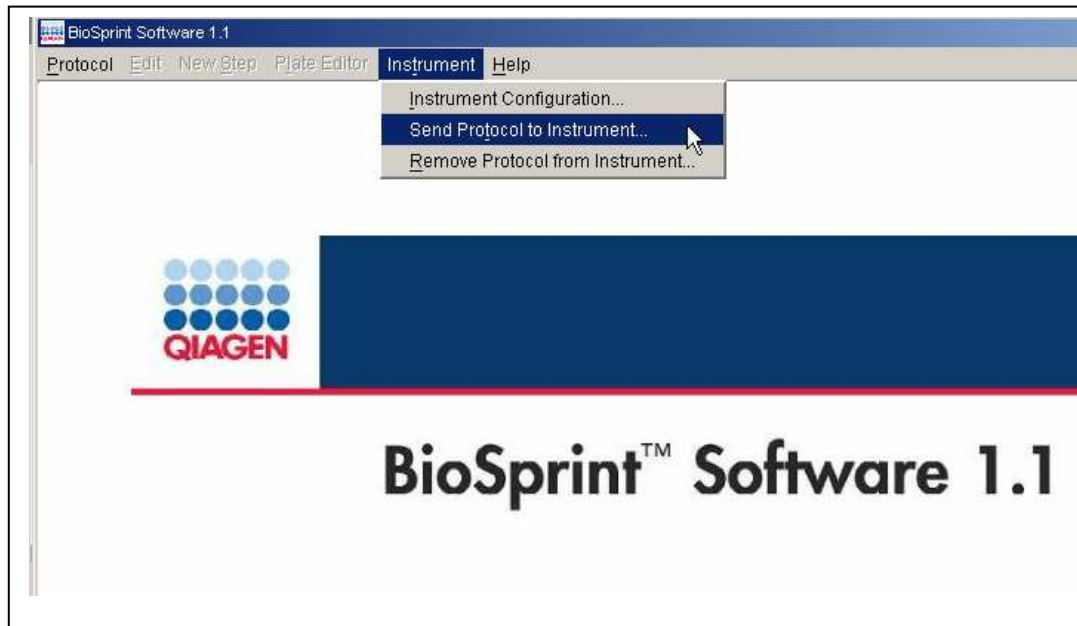


5) Field Serial Number (back of instrument) can be left blank – ignore possible error messages.



6) Click "Close"

7) Click "Send Protocol to Instrument"



8) Select Protocol File from menu and click on "Send protocol"

